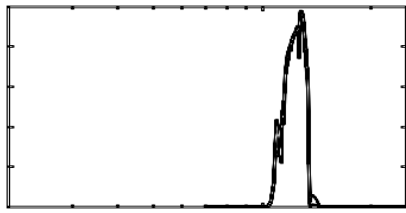
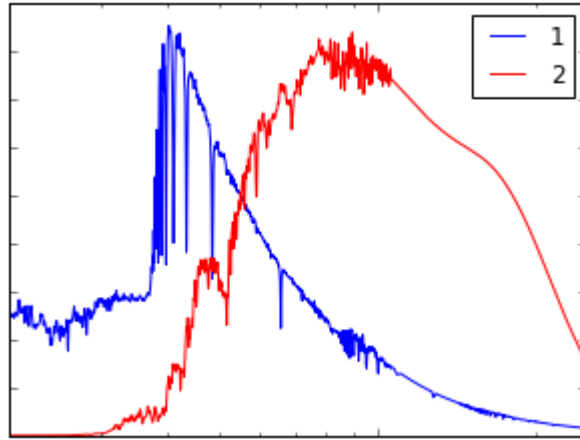


Input **Source** object

Output **FITS** image

A

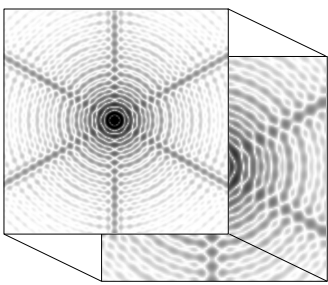
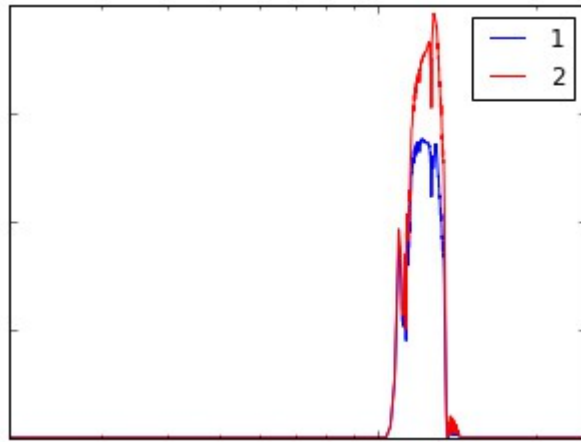
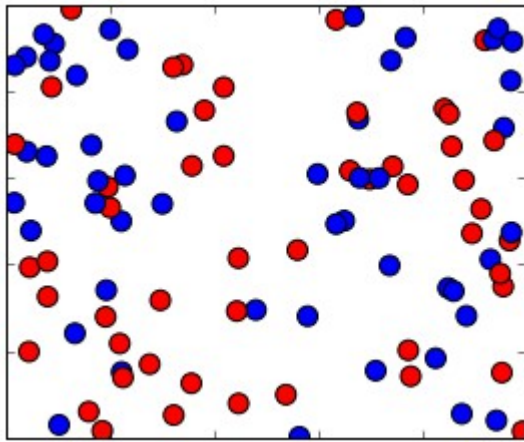
x	y	ref	weight
arcsec	arcsec	#	
0.27	0.48	2	0.2
0.09	0.30	1	0.9
0.95	0.85	2	0.6
...



λ -effects

e.g. atmospheric transmission, filter

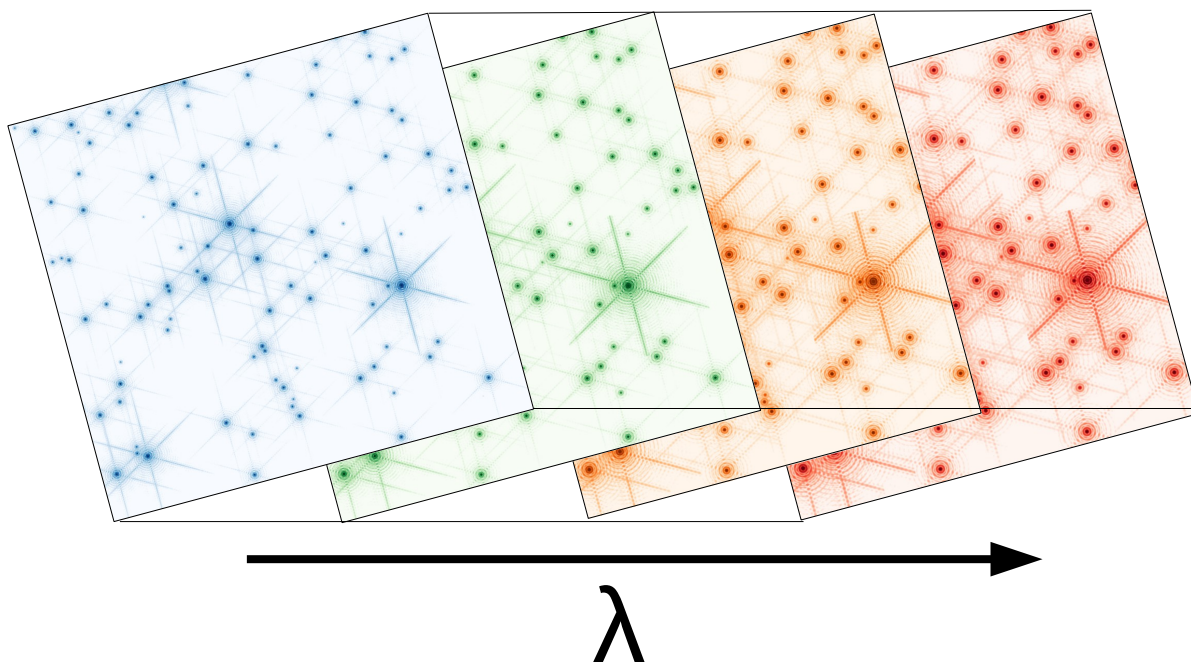
B



(x,y,λ) -effects

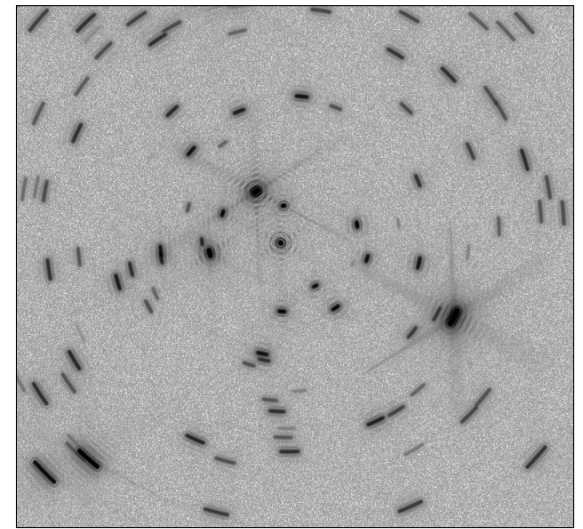
e.g. convolution with PSF

C



Combine
all slices into a
single image

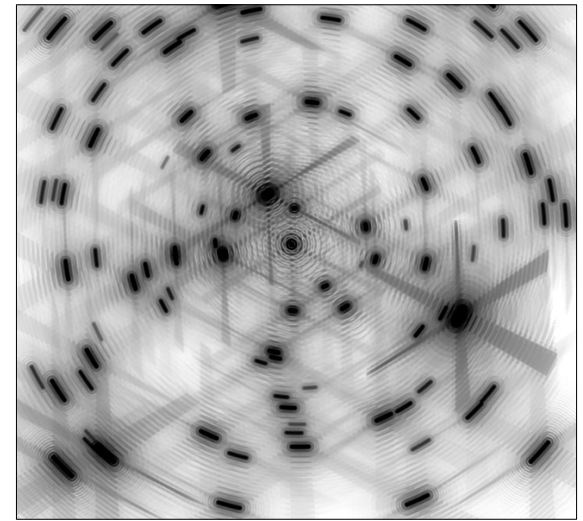
F



detector-effects

e.g. read noise,
persistence

E



(x,y) -effects

e.g. field rotation

D

